

# Heart Failure

## shared care

### Partner with *your Specialist and your GP*

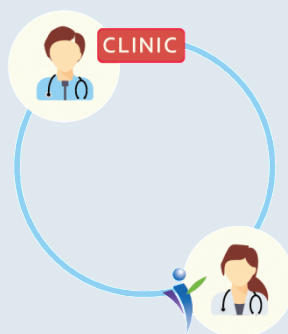
On top of your Specialist, your GP can also co-monitor your heart conditions and help to manage your other health concerns like minor acute illnesses (e.g. flu) and preventive care (e.g. vaccinations, health screening)

### Why Participate?



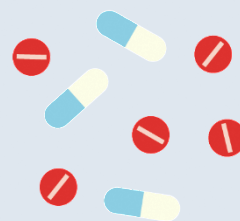
#### Near Your Home, At Your Convenience

See your trusted GP located near your home to reduce unnecessary trips to the specialist. You may choose to see your GP on evenings and/or weekends.



#### Continue to Receive Specialist Care

You may continue to see your HF specialist, with your GP co-monitoring your condition between specialist visits, and communicate with your specialist if needed.



#### Continue to Receive Subsidised Medications

You will continue to receive subsidised medications from KTPH Pharmacy. You can either choose the home delivery option or collect at KTPH Medi-Box.

### For More Information:

Contact our Partnership Officer at 9757 4194

Office Hours: Mon-Fri: 9am-5pm,

Closed on Sat, Sun and Public Holidays